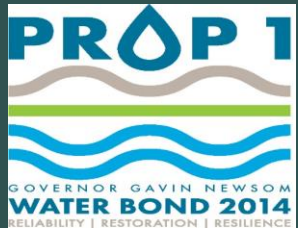




RESTORE MCCOSKER CREEK PROJECT

ROBERT SIBLEY VOLCANIC REGIONAL PRESERVE

PROJECT PARTNERS

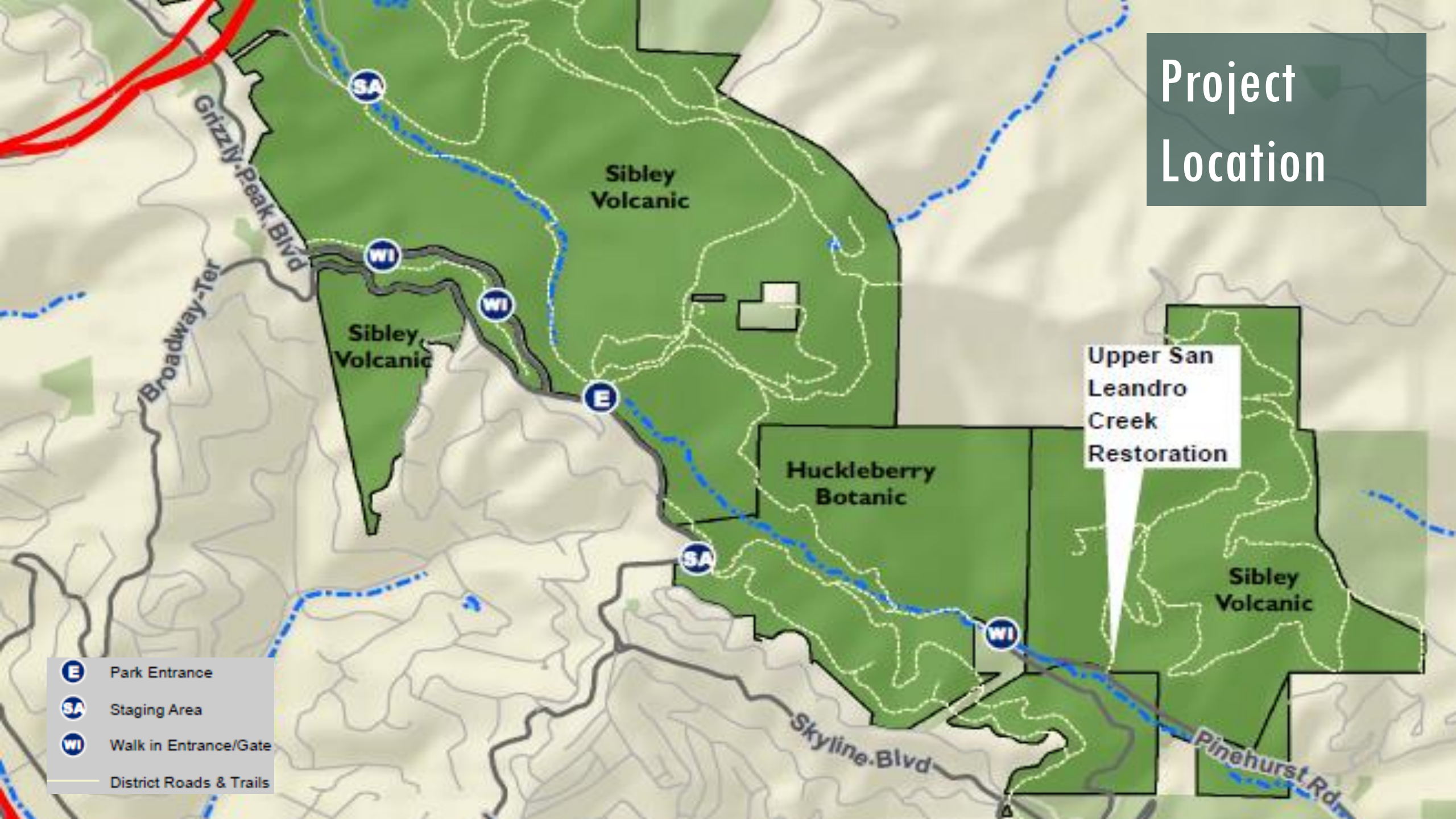


EAST BAY REGIONAL PARK DISTRICT'S LARGEST CREEK RESTORATION PROJECT

LARGEST CREEK DAYLIGHTING PROJECT IN THE EAST BAY



Project Location



- E** Park Entrance
- SA** Staging Area
- WI** Walk in Entrance/Gate
- District Roads & Trails



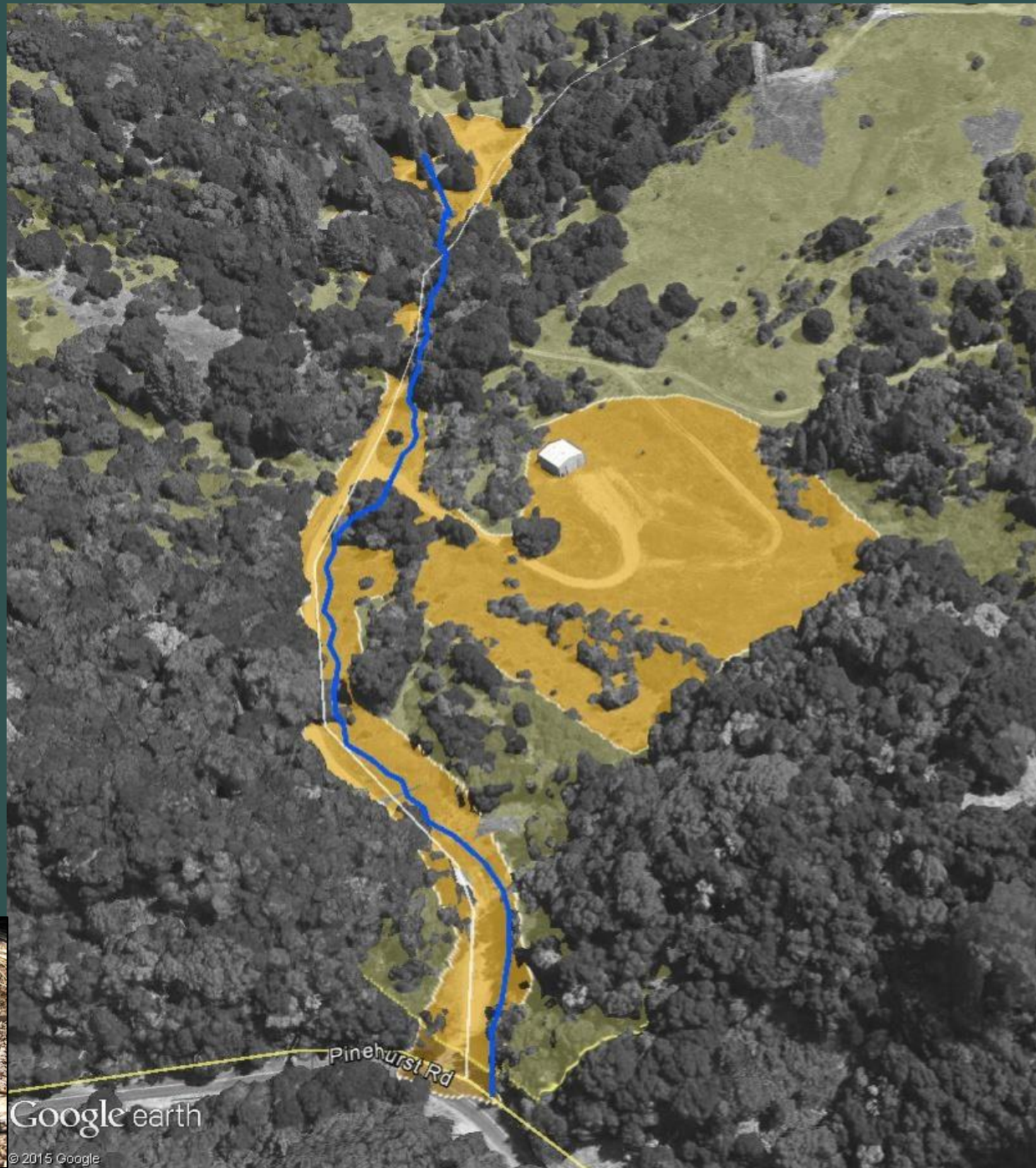


Project will create habitat for:

Rainbow trout

California red-legged frog

Alameda whipsnake



HISTORY AND BACKGROUND



- Previous land use: homesteads, ranching, agriculture, paving and quarry operations, equipment yards
- Upper San Leandro Creek culverting and filling began in 1958



• Photos of project site prior to construction

2,900

**Linear Feet
Daylighted
Culvert Removal**

3,000

**Linear Feet
Restored Creek**

37,000

**Cubic Yards
Excavated Fill**

250

**Acres
Open Space Area**

4.0

**Acres
Restoration and
Enhancement Area**



Rainbow Trout Habitat

Reconstruct the creek bed with a mix of boulder cascades, step pools, pocket pools, and spawning sites for rainbow trout

Invasive Species

Remove invasive species and non-native plants



Climate Change

Erosion control and revegetation that supports establishment of sustainable and resilient upland habitats. Reduce surface and bank erosion leading into San Leandro Creek



Revegetation

New native habitat communities: riparian, floodplain, lower bank, upper bank, and upland. Plant over 5,000 native plants and trees. Many collected from seed within watershed

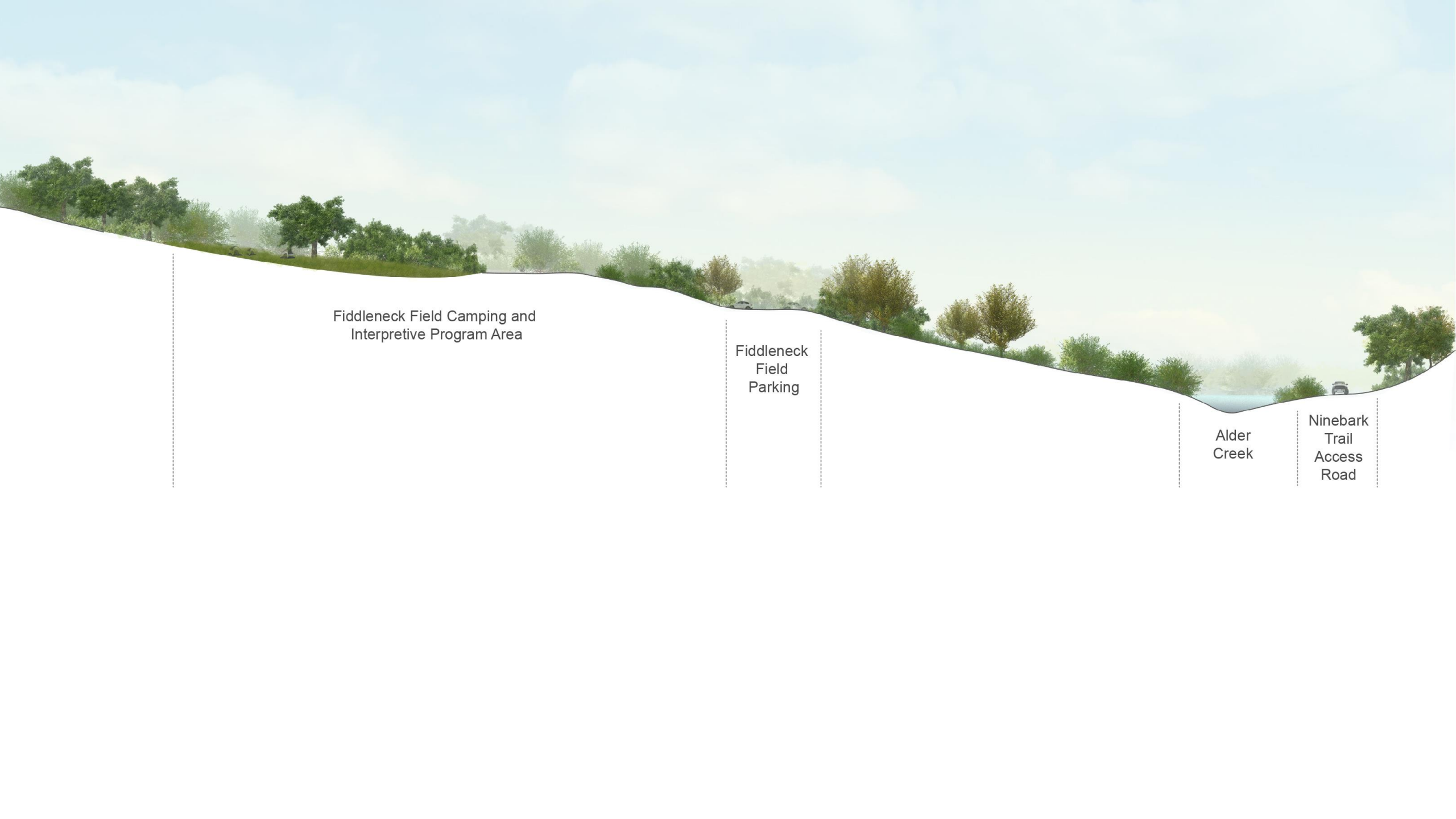


Project Facts & Goals



		Linear Feet	Area Acres	Completion Date
Alder	Main Stem	1,600	3.3	2020
	East Branch	400	incl.	2022
Alder	West Branch	230	incl.	2022
Leatherwood		770	.7	2022
	Total	3,000	4.0	

Sibley Alder & Leatherwood Creek Restoration

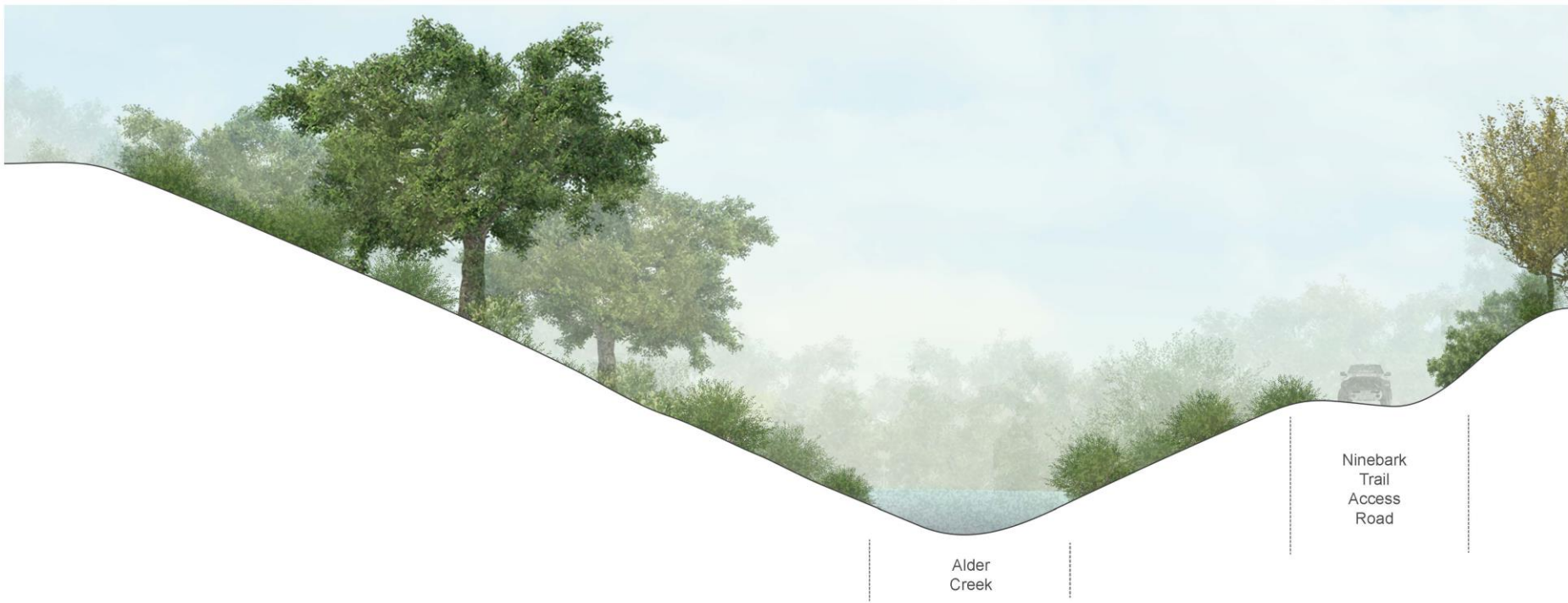
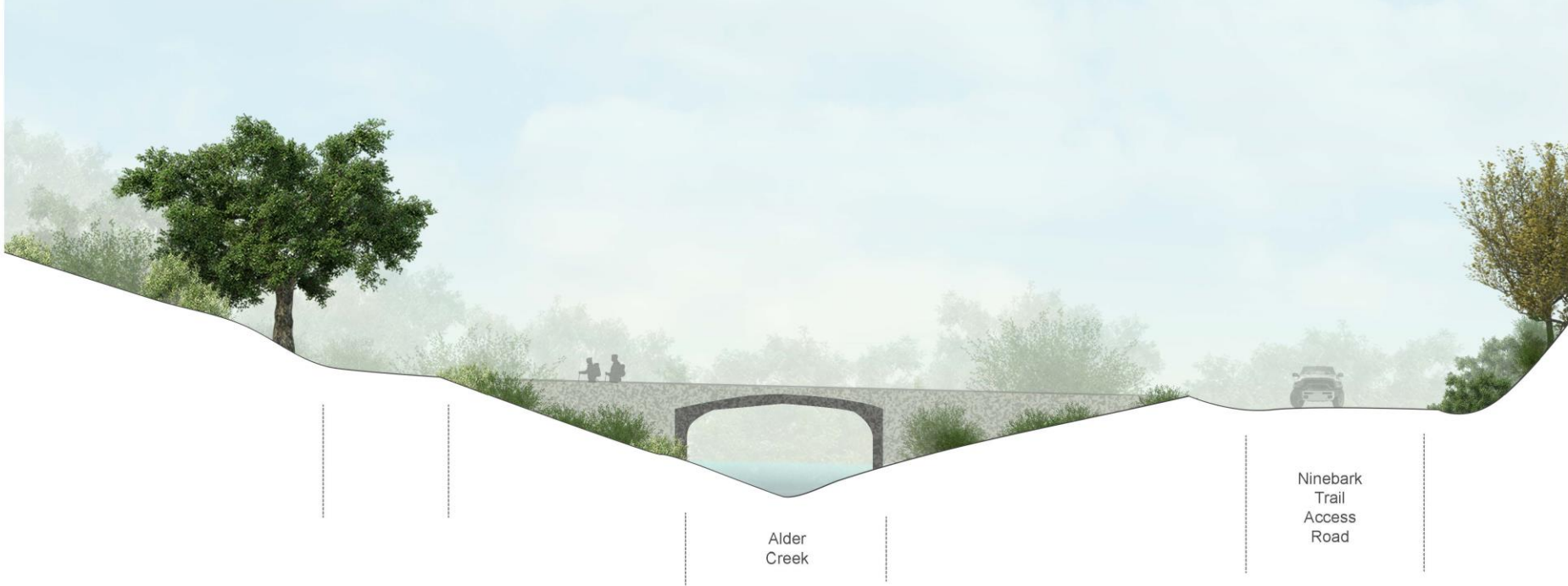


Fiddleneck Field Camping and
Interpretive Program Area

Fiddleneck
Field
Parking

Alder
Creek

Ninebark
Trail
Access
Road

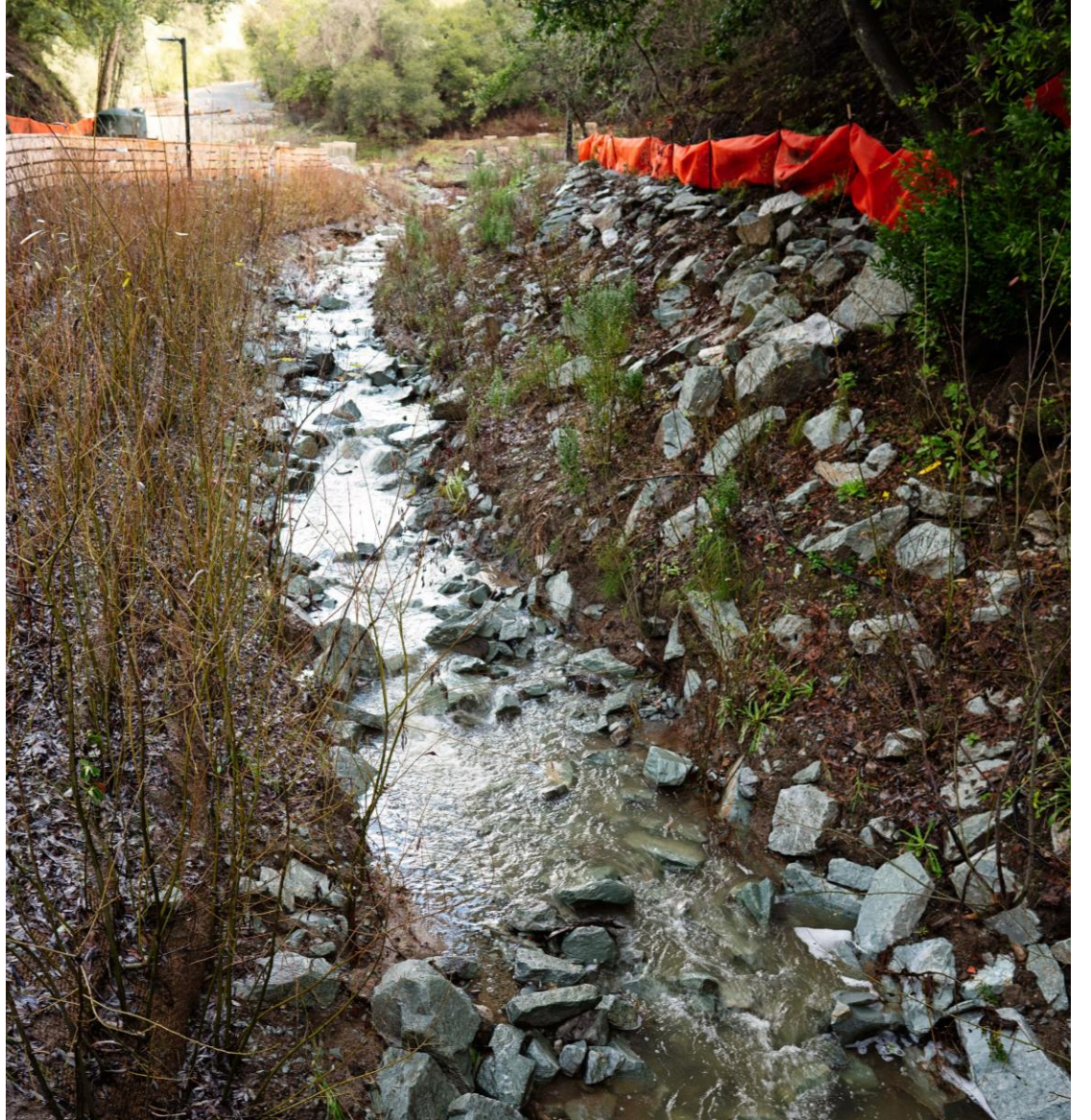


A CALIFORNIA CONSTRUCTION STORY

- Fire
- Drought
- Flood
- Pandemic
- Birds

















WILDLIFE

















